

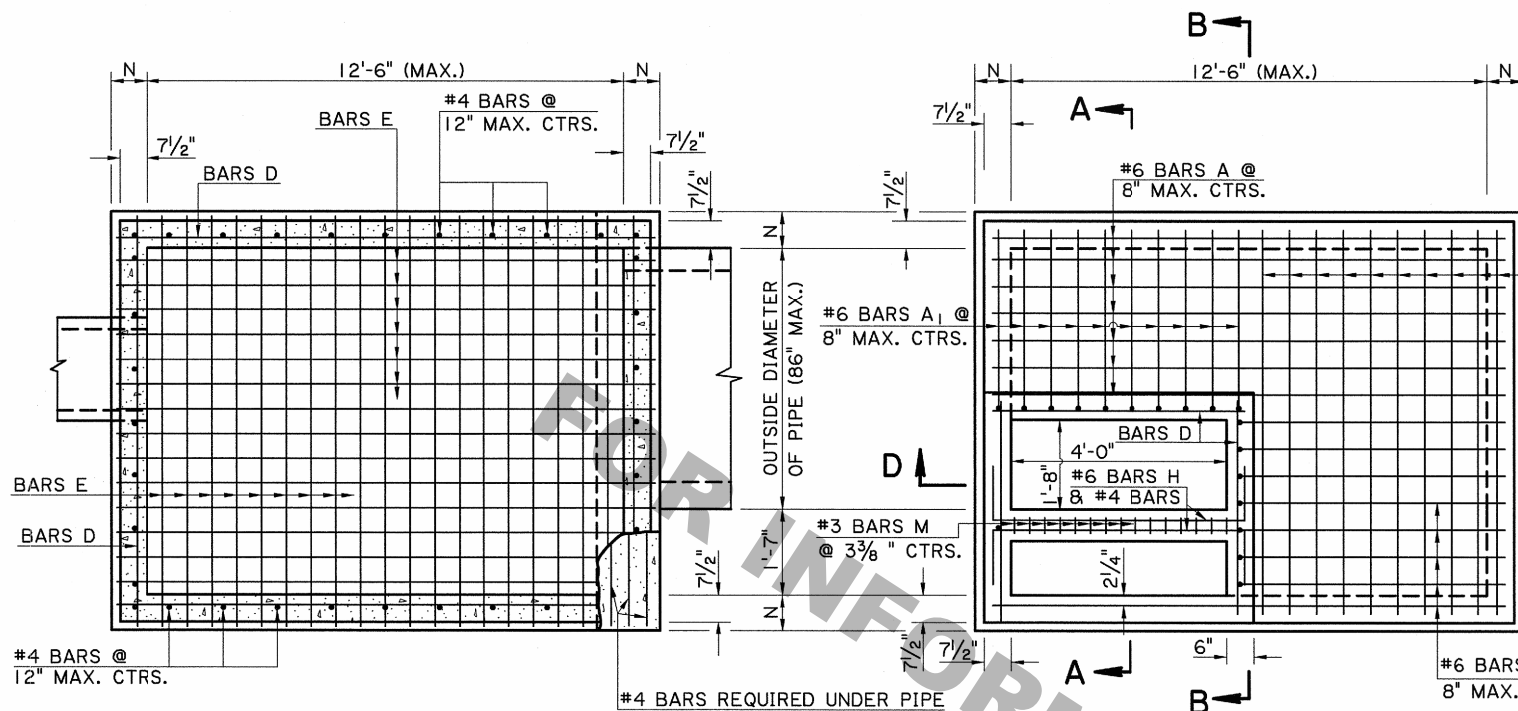


GENERAL NOTES:

- CATCH BASIN IS DESIGNED ACCORDING TO 4TH ED. 2007 AASHTO LRFD PROCEDURES. SECTION 702 OF THE DOTD STANDARD SPECIFICATIONS SHALL APPLY.
- CONCRETE: ALL CONCRETE SHALL BE CLASS "M" MINOR STRUCTURE. ALL EXPOSED EDGES SHALL BE CHAMFERED 3/4 IN. EXCEPT AS NOTED.
- REINFORCING STEEL: REINFORCING STEEL SHALL BE GRADE 60. DIMENSIONS ARE TO BAR CENTERS. MINIMUM COVER FOR REINFORCING BARS SHALL BE 2 IN. CLEAR UNLESS SHOWN OTHERWISE.
- AS DEPTH INCREASES THE WALL AND SLAB THICKNESSES AND REINFORCEMENT SHOULD BE INCREASED AS SHOWN IN THE TABLE BELOW. THE CONTRACTOR HAS THE OPTION TO PROVIDE THE MAXIMUM REQUIRED WALL THICKNESS FOR THE FULL DEPTH OF THE STRUCTURE.

DEPTH RANGE	WALLS		BOTTOM SLAB	
	N IN.	D BARS SPAC., IN.	T IN.	E BARS SPAC., IN.
0' TO 7'	7.5	4	4.5	5.0
7'-1" TO 10'	9.0	5	5.5	4.5

- FOR DETAILS OF METAL COVER, FRAME, AND GRATE, SEE STD. PLAN MC-01, TYPE H & TYPE I.
- THE CONTRACTOR WILL NOT POUR ABOVE THE BOTTOM OF THE SLAB UNTIL THE PAVING ADJACENT TO THE CATCH BASIN HAS BEEN COMPLETED.

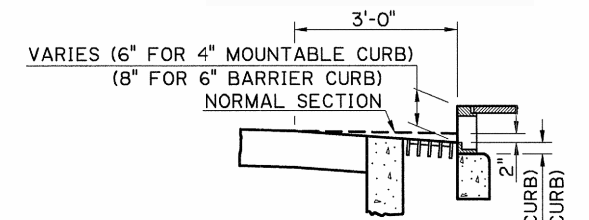


SECTION
(SHOWING BOTTOM SLAB & WALL REINFORCING STEEL)

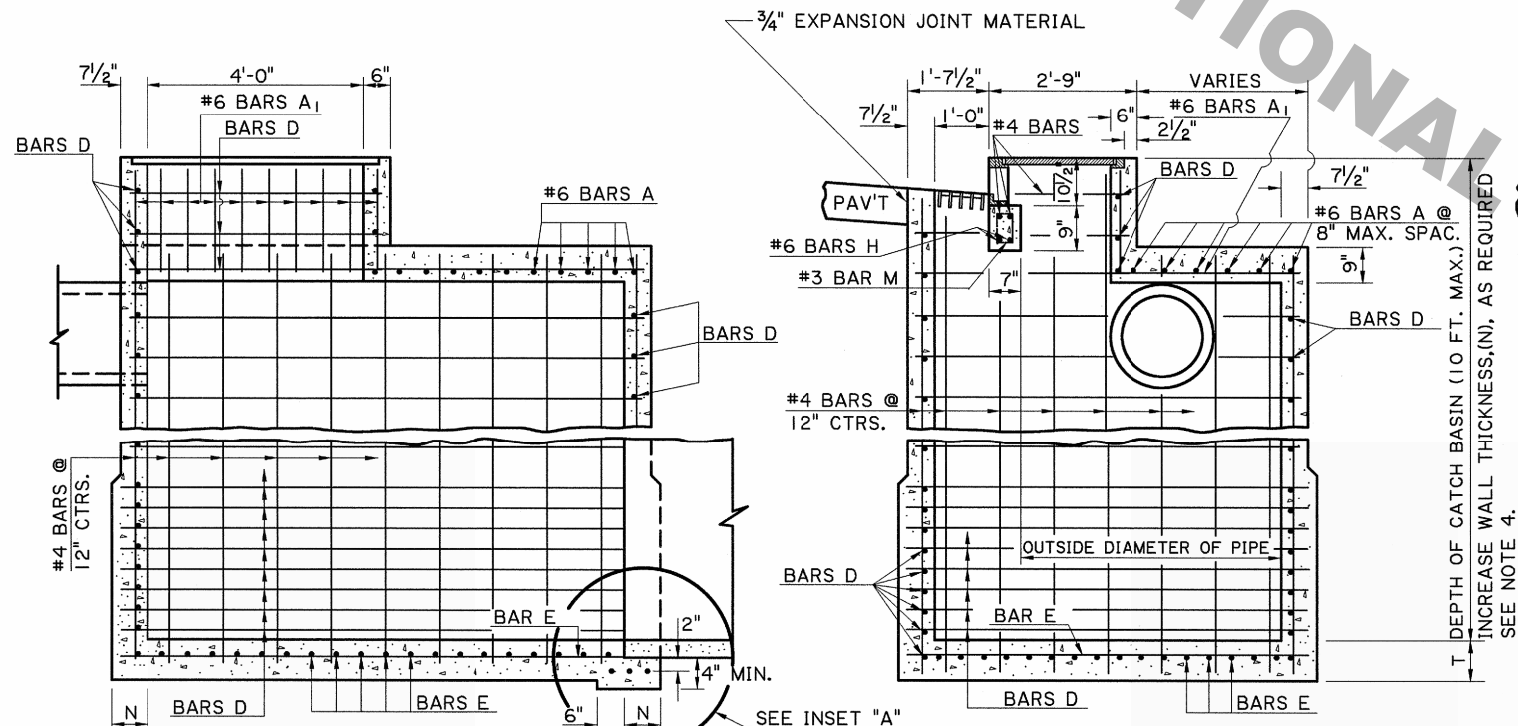
PLAN
(SHOWING TOP SLAB REINFORCING)



#3 BARS M

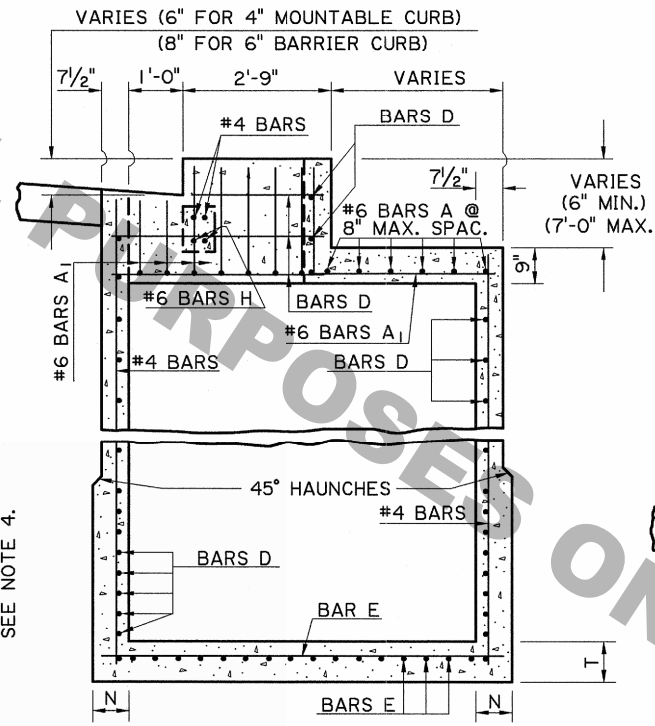


SECTION
(SHOWING PAVEMENT SUMP TYPICAL)

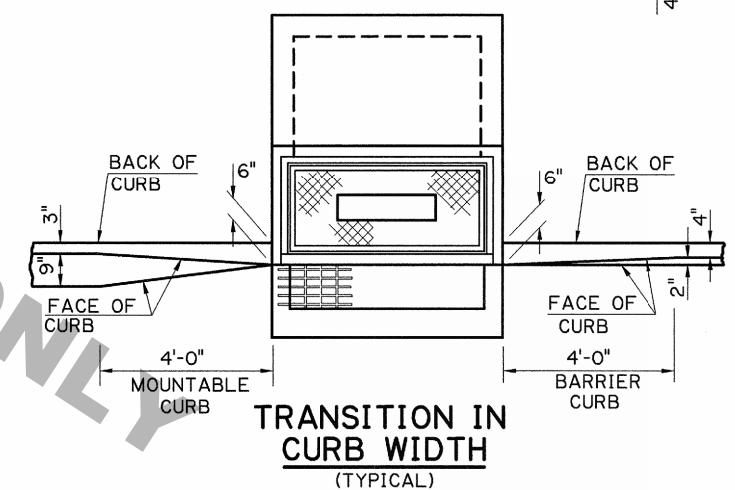


SECTION D-D

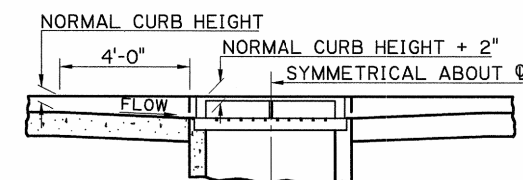
SECTION A-A



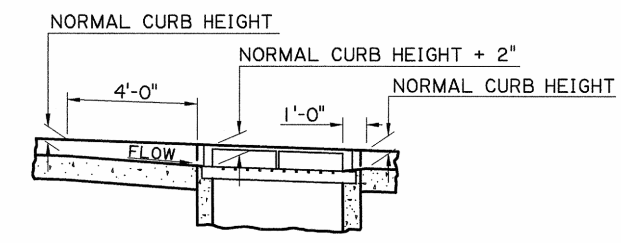
SECTION B-B
SHOWING MOUNTABLE CURB



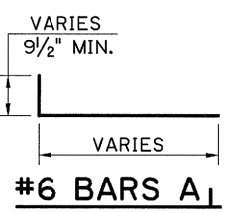
TRANSITION IN CURB WIDTH
(TYPICAL)



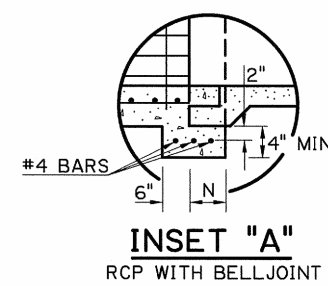
TRANSITION IN CURB HEIGHT CATCH BASIN AT LOW POINT



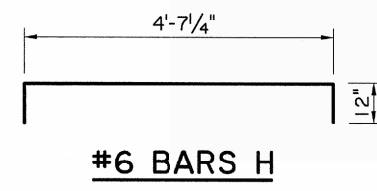
TRANSITION IN CURB HEIGHT CATCH BASIN ON A GRADE



#6 BARS A1



INSET "A"
RCP WITH BELLJOINT



#6 BARS H

SHEET NUMBER: _____
 PARISH: _____
 FEDERAL PROJECT: _____
 STATE PROJECT: _____
 DESIGNED: PAA
 CHECKED: _____
 DETAILED: KAJ
 CHECKED: PAA
 DATE: 2-10-08
 SHEET: 1 OF 1
 Rev. to AASHTO LRFD Procedures, Rev. size 8'-10" WMR
 JDK
 WNR
 JCM
 BY: _____
 NO. _____
 DATE _____
 REVISION DESCRIPTION
 4 3-10-11
 3 2-23-07
 2 4-10-00
 1 8-19-98
 CHANGED SHEET BORDER AND ADDED NAME
 REMOVED Manhole Steps
 REVISED TITLE BLOCK
 LUISIANA REGISTERED PROFESSIONAL ENGINEER
 WILLIAM M. RAY
 No. 24936
 State of Louisiana
CONCRETE CATCH BASIN AND GUTTER OPENING
 4" Mountable Or 6" Barrier Curb
 Max. Size: 72" RCP x 120" RCP, Max. Depth 10"
 GENERAL DETAIL
 CB-SD07-2
 HYDRAULICS SECTION